

Ordinary Pressure Gauges (Silver M)



OUTLINE

This is a reasonable-priced, general-purpose pressure gauge, manufactured in accordance with JIS B 7505 Bourdon tube Pressure Gauge Standard, and is applicable to air pressure, hydraulic pressure and other general pressure measuring.

FEATURES

- This is a pressure gauge in accordance with the JIS Standard, demonstrating the stability of quality and performance.
- A galvanized iron steel with self-corrosion resistance is used to the case, demonstrating excellent corrosion resistance.
- The exterior frame is fixed with screws. Easy maintenance work and marking by detaching it are assured.

- * In case of selecting pressure gauge, choose the pressure range which can be used in between 30 ~ 65% of full scale, so that the gauge can give its full capacity.
- * Also should be confirmed whether the wetted parts material is suitable for the fluid or not.

SPECIFICATION 1

Fluid:

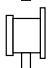
Gas or liquid

Size:

60 DIA., 75 DIA., 100 DIA.

Mounting:

Stem  Type A

 Type B

Panel  Type D

(mounting hole, the outside flange center socket, outside flange eccentricity socket)

Connection:

G1/4B (PF), G3/8B (PF), R1/4 (PT),
R3/8 (PT), R1/2 (PT), 1/2NPT

Wetted parts material:

Bourdon tube Copper alloy (C6872T) (5MPa range over is 316st.st.)
Socket Copper alloy (C3604BD) (Type D of 75 DIA., 100 DIA. is CAC203)

Pressure range:

0 ~ 0.1 → 0 ~ 50MPa
-0.1 ~ 0 → -0.1 ~ 2MPa

Operating temperature:

-5 ~ 40°C

Accuracy:

±1.6%F.S. (JIS Standard)
±1.5%F.S. (With no JIS mark)

Window:

10MPa Range less than: Inorganic glass
10MPa Range over: Acrylic glass

Blowout disk:

When an emergency, Bourdon tube exploded, it open up internal pressure from blowout disk, and blowout disk prevents puncture of Window.

Note To keep normal function, please take a space behind of gauge at least 10mm when installing. Don't process or stop up the blowout disk.

Range less than 10MPa: Without blowout disk
Range 10MPa or over: With blowout disk

Function:

Standard, vibration-proof type (V)

* Division of application is based on with JISB7505 Bourdon gauge.

Case material · Efinishing:

Case Electricity galvanizing sheet-steel (SECC) · Black (GS58, 59 is colored clo-mates)

Cover 430st.st. (SPCC abd chrome plating for GS55 ~ GS59)

Treatment: (Option)

Use no oil & water

(Manufactured and treated in a way that there shall be no oil or water residue at the wetting parts.)

Throttle: (Option)

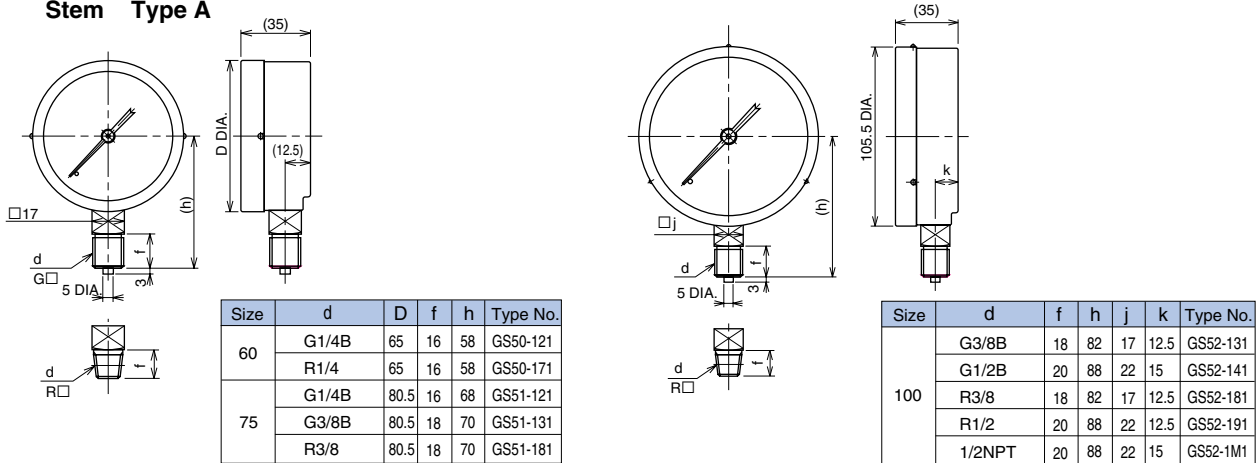
For reducing pulsating pressure, throttle is put on the inlet port.
Type No. : FS10-011

Dial scale specified: (Option)

Red line, Colored circle, Customer's logo

SPECIFICATION 2

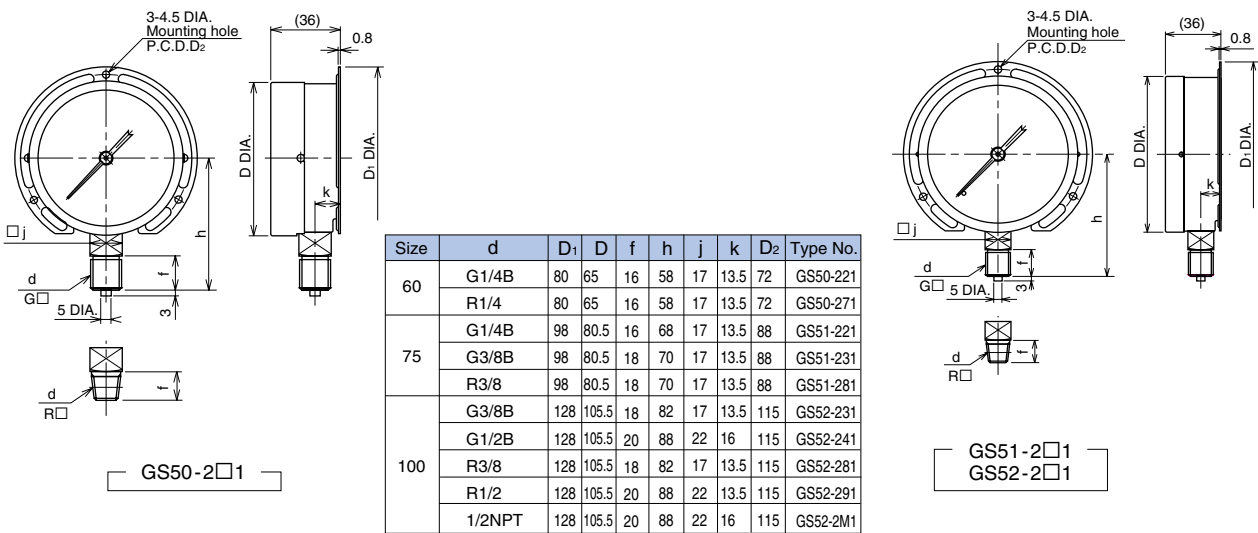
Stem Type A



GS50-1□1
GS51-1□1

GS52-1□1

Stem Type B

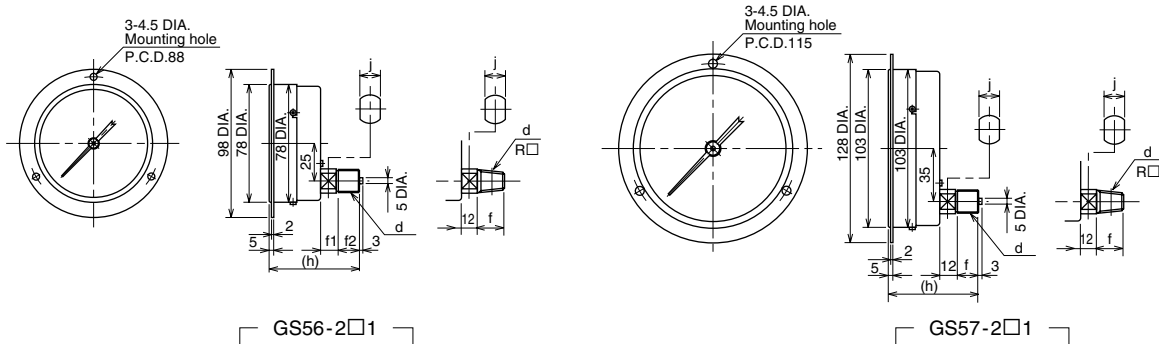


GS50-2□1

GS51-2□1
GS52-2□1

Panel Type D

75 DIA., 100 DIA.



GS56-2□1

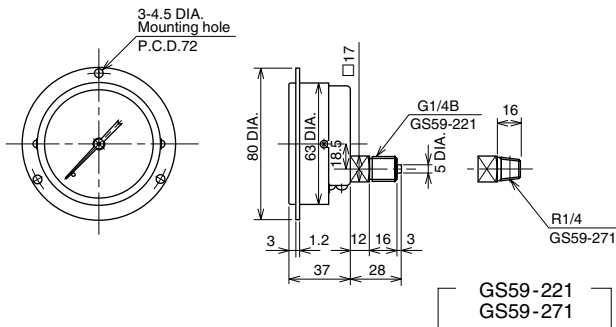
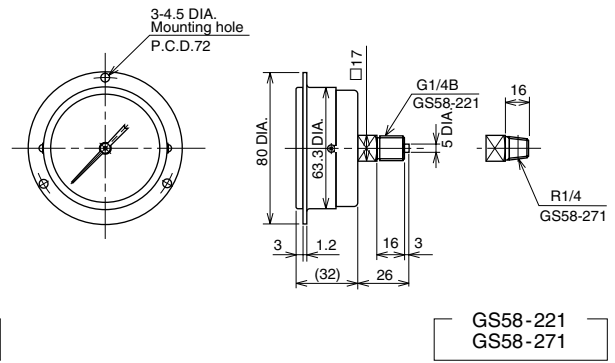
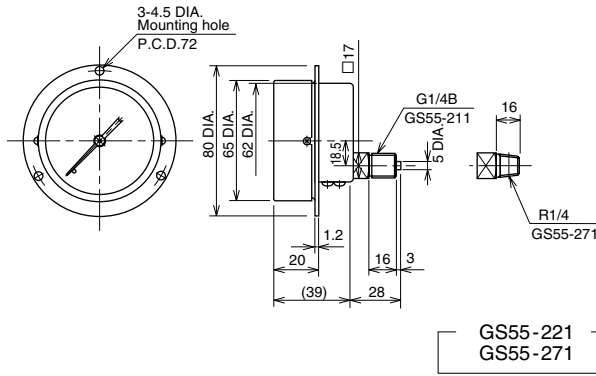
GS57-2□1

Size	d	f ₁	f ₂	h	j	Type No.
75	G1/4B	10	16	63.5	12	GS56-221
	G3/8B	12	18	65.5	14	GS56-231
	R3/8	12	18	65.5	14	GS56-281

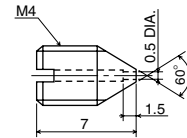
Size	d	f	h	j	Type No.
100	G3/8B	18	66.5	14	GS57-231
	G1/2B	20	68.5	17	GS57-241
	R3/8	18	66.5	14	GS57-281
	R1/2	20	68.5	17	GS57-291
	1/2NPT	20	68.5	17	GS57-2M1

Panel Type D

60 DIA.



Throttle



FS10-011

Material: Copper alloy
(C3604BD)

SPECIFICATION 3

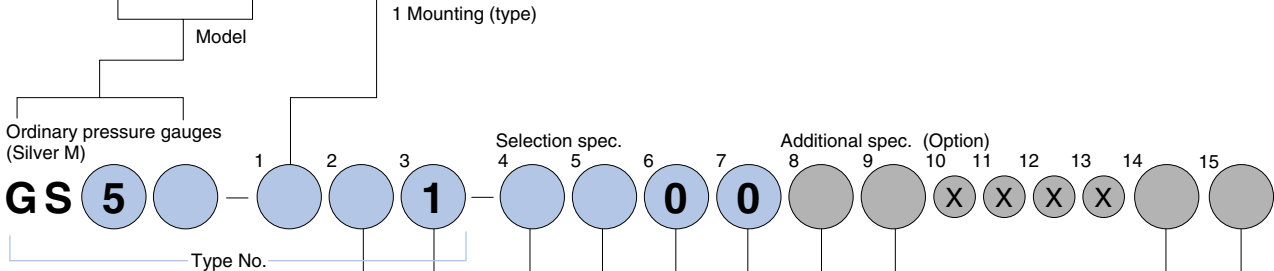
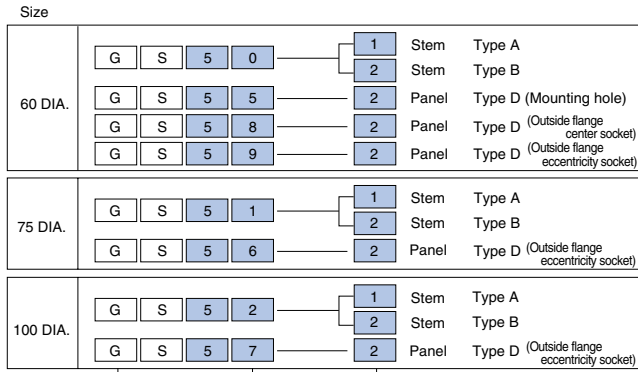
Minimum graduation

Pressure Range (MPa)	Size		
	60 DIA. JIS	75 DIA. JIS	100 DIA. JIS
	1.6%	1.6%	1.6%
~ 0.1	0.002	0.002	0.002
~ 0.16	0.005	0.005	0.005
~ 0.2	—	—	—
~ 0.25	0.005	0.005	0.005
~ 0.3	—	—	—
~ 0.4	0.01	0.01	0.01
~ 0.6	0.01	0.01	0.01
~ 1	0.02	0.02	0.02
~ 1.5	—	—	—
~ 1.6	0.05	0.05	0.05
~ 2	—	—	—
~ 2.5	0.05	0.05	0.05
~ 3.5	—	—	—
~ 4	0.1	0.1	0.1
~ 5	—	—	—
~ 6	0.1	0.1	0.1
~ 7	—	—	—
~ 10	0.2	0.2	0.2
~ 15	—	—	—
~ 16	0.5	0.5	0.5
~ 25	0.5	0.5	0.5
~ 35	—	—	—
~ 40	—	1	1
~ 50	—	—	—
-0.1 ~ 0	0.002	0.002	0.002
~ 0.1	0.005	0.005	0.005
~ 0.16	0.005	0.005	0.005
~ 0.2	—	—	—
~ 0.25	0.01	0.01	0.1
~ 0.3	—	—	—
~ 0.4	0.01	0.01	0.01
~ 0.6	0.02	0.02	0.02
~ 1	0.02	0.02	0.02
~ 1.5	—	—	—
~ 1.6	0.05	0.05	0.05
~ 2	—	—	—
~ 2.5	0.05	0.05	0.05

Type No. constitution

Please specify Type No., each specification and range when ordering.

Note: For this Model, there is no applicable item for the figures X, but please specify X when ordering.



2 Connection

Possible or not	GS50 · 55 GS58 · 59	GS51 · 56	GS52 · 57
2	G1/4B	○	○
3	G3/8B	—	○
4	G1/2B	—	○
7	R1/4	○	—
8	R3/8	—	○
9	R1/2	—	○
M	1/2NPT	—	○

3 Wetted parts material

- 1 Bourdon tube: C6872T
(5MPa range over is 316st.st.)
Socket: C3604BD
(75 DIA., type D of 100 DIA. is CAC203)

4 Pressure range (MPa)

(When ordering, please specify pressure range & unit.)

	Possible or not	60 DIA.	75 DIA.	100 DIA.
1	-0.1 - 0, 0.1, 0.16, 0.2, 0.25, 0.3, 0.4, 0.6, 1, 1.5, 1.6, 2, 2.5	○	○	○
2	0 - 0.1, 0.16, 0.2, 0.25, 0.3, 0.4, 0.6, 1, 1.5, 1.6, 2, 2.5, 3.5, 4, -0.1-1	○	○	○
3	0 - 5, 6, 7	○	○	○
4	0 - 10, 15, 16	○	○	○
5	0 - 25	○	○	○
	0 - 35, 40	—	○	○
6	0 - 50	—	—	○

9 Other additional spec.

- 0 Nil
- 1 Please specify your requirement
Dial scale specified, throttle option

8 Treatment

- 0 Nil
- 1 Use no oil
- 2 Use no water
- 3 Use no oil & water

7 Window

- 0 Inorganic glass (10MPa range or less)
Acrylic glass (10MPa range over)

6 Pointer

- 0 Standard type

5 Function

- 0 Standard
- C V: Vibration-proof type

14 Standard

- J JIS Accuracy
±1.6% F.S.
- X Not JIS standard

15 Document

- 0 Nil
- 1 Please specify your requirement
Drawing one sheet, Instruction manual,
Inspection procedure, Mill sheet,
Test report

The contents in the catalogue are subject to change without notice.

NAGANO KEIKI CO., LTD.



UEDA FACTORY (JQA-0794)
MARUKO FACTORY (JQA-0789)



UEDA FACTORY (JE064A)
MARUKO FACTORY

HEAD OFFICE & OVERSEAS SALES DEPT : 1-30-4, HIGASHIMAGOME OHTA-KU, TOKYO, JAPAN.
PHONE : +81-3-3776-5328
FAX : +81-3-3776-5447
E-mail : overseas_sales_dept@naganokeiki.co.jp
URL : http://www.naganokeiki.co.jp/

OVERSEAS PLANTS OR AFFILIATES: U.S.A., KOREA, GERMANY
OVERSEAS SALES NETWORK: AUSTRALIA, HONG KONG, INDONESIA, KOREA, MALAYSIA, PHILIPPINES, SINGAPORE, TAIWAN, THAILAND, U.S.A.